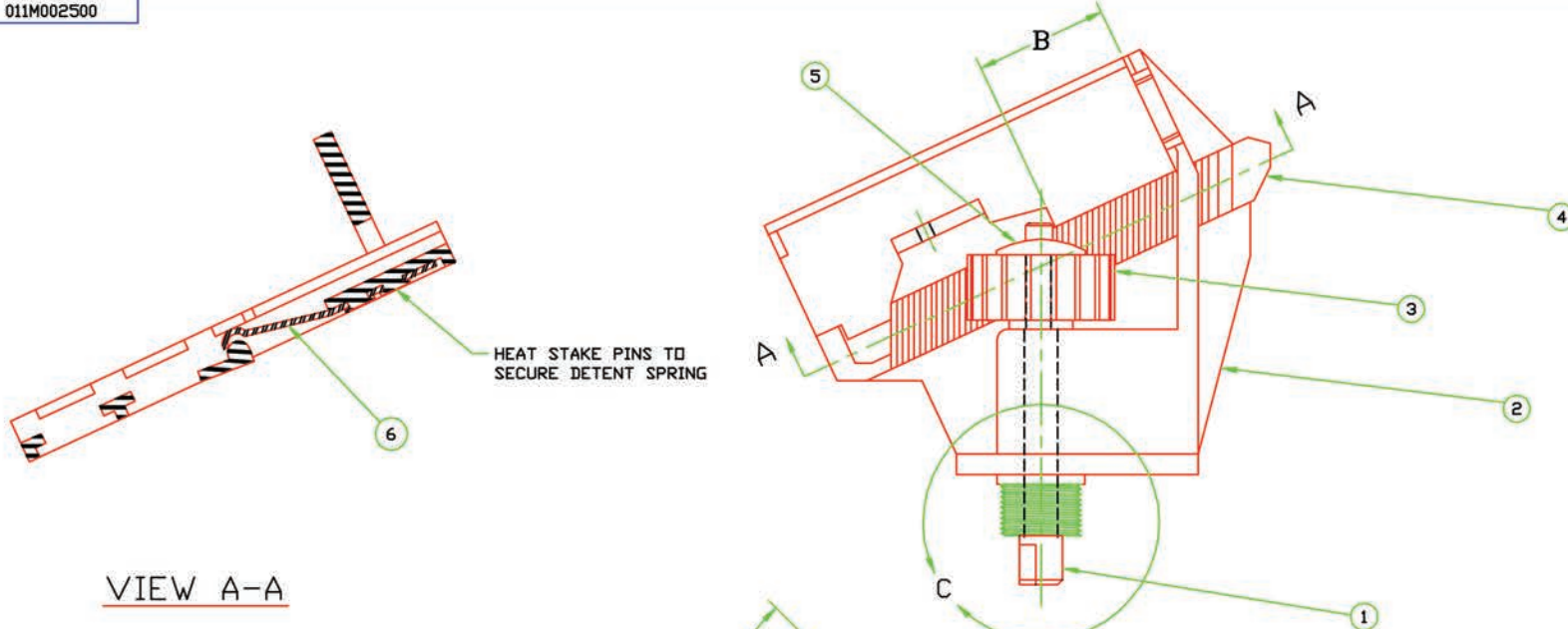




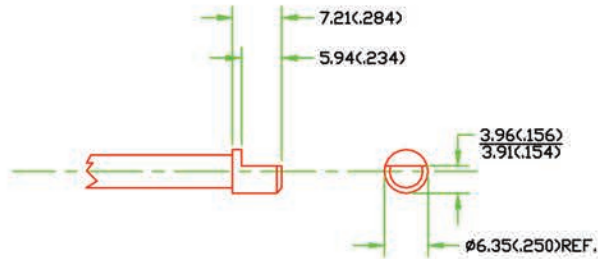
011M002500

011M002500



HEAT STAKE PINS TO SECURE DETENT SPRING

VIEW A-A



VIEW IN CIRCLE 'C'  
MOUNTING BOSS &  
SHAFT END DETAIL

- NOTES:
- ESTABLISH DIM. 'B' WITH FLAT ON SHAFT AND FLAT ON THREADED BOSS. IN 'A' RELATIONS AS SHOWN.
  - ASSEMBLY TO HAVE 15 DETENT POSITIONS OVER 1.65 MIN. TRAVEL.
  -

6	005M464300	DETENT SPRING
5	005M461200	PUSH NUT
4	005M461002	RACK - CONTINUOUS DETENT
3	005M460900	PINION GEAR
2	005M461101	HOUSING
1	005M460800	SHAFT

011M002500	45°	0.83	NONE	NONE	NONE
ASS'Y NO.	A	B	NUT	WASHER	IDENTIFICATION MARK

ITEM NO.	PART NO.	DESCRIPTION
DIMENSIONS ARE IN INCHES TOLERANCE UNLESS OTHERWISE SPECIFIED		ALAN Manufacturing Inc. Wooster Ohio
		HOUSING ASSEMBLY
DRAWN: JI	CHECKED: BG	APPROVED: JBG
DATE: 6-13-94	SCALE: 2/1	
		011M002500

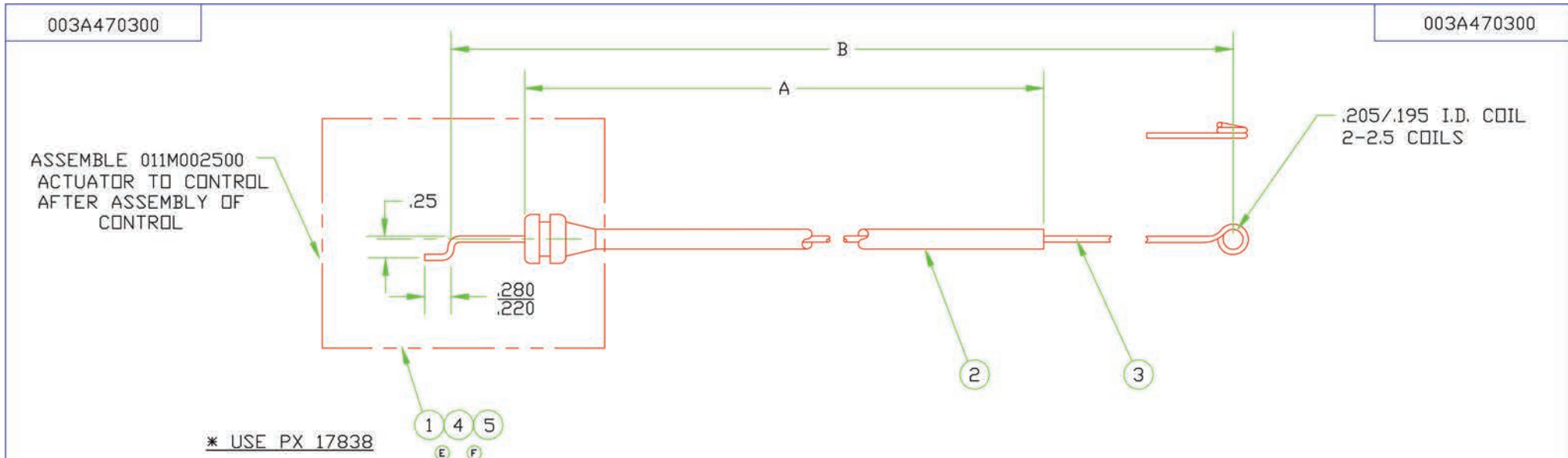
DATE	BY	CHKD	APPR	PCD/PT	ISSD	SCALE	011M002500
------	----	------	------	--------	------	-------	------------

# ALAN

Manufacturing Inc.



Phone: (800) 435-ALAN (2526)  
 Fax: (877) 333-ALAN (2526)  
 Email: alansteel@alanmfg.com  
 www.ALANmfg.com



**NOTES:**

1. CONDUIT & GROMMET JOINT MUST WITHSTAND 35LBS. PULL TEST.

003A470304	24.10(612.1) 23.90(607.1)	26.31(668.3) 26.19(665.2)	006M205215	D
003A470303	15.60(396.2) 15.40(391.2)	17.81(452.4) 17.69(449.6)	006M205211	C
003A470302	27.90(708.66) 27.70(703.58)	30.12(765.05) 30.00(762.00)	006M205210	B G
003A470301	42.12(1069.8) 41.88(1063.8)	44.31(1125.5) 44.19(1122.4)	006M205209	A
003A470300	11.35(288.3) 11.15(283.2)	13.56(344.4) 13.44(341.4)	006M205208	
PART NO.	A	B	CONDUIT ASSEMBLY	

5	012-121600	WASHER (SHIP LOOSE)
4	010-101300	NUT (SHIP LOOSE)
3	210W000000	.054(1.37) DIA. S.S. WIRE
2	SEE CHART	CONDUIT ASSEMBLY - 417T000000 + 005M361005 GROMMET
1	011M002500	ACTUATOR
ITEM NO.	PART NO.	DESCRIPTION

10393	G	WAS RD-5-8152-2780	2/26/99	JJ	JSI	CH
10151	F	ADDED NUT & WASHER TO CHART	10/30/96	TH	BS	BI
10070	E	REMOVED WASHER & NUT FROM CHART	6/4/96	JJ	BS	BI
10048	B	ADDED 003A470304	4/16/96	JJ	BS	BI
10013	C	ADDED 003A470303	9/29/95	JJ	BS	BI
9979	B	ADDED 003A470302	6/7/95	JJ	BS	BI
9972	A	ADDED 003A470301	5/22/95	JJ	BS	BI
E.C.N.	LET.	REVISION	DATE	BY	CHKD.	APPR.

DIMENSIONS ARE IN INCHES (MILLIMETERS)		ALAN Manufacturing Inc. Wooster Ohio	
TOLERANCES UNLESS OTHERWISE SPECIFIED		HEATER/VENT CONTROL WITH ACTUATOR	
X.XX(X.X)	+/-0.020(0.50)	DRAWN JJ	CHECKED BS
X.XXX(X.XX)	+/-0.010(0.25)	APPROVED BI	DATE 3-3-95
ANGLES	+/-1	SCALE FULL	003A470300